

## Centrs, Upīša iela 13, Latvia

850 EUR/Month 15.74 EUR/m<sup>2</sup>

---

### Basic information

Property type: Apartment

Rooms: 2

Floor: 2. from 5.

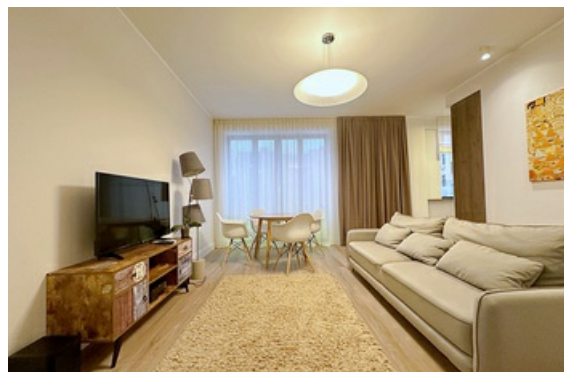
Area: 54.0 m<sup>2</sup>

Building type: Monolithic reinforced concrete structure

Series: New Project

Elevator: Yes

Balcony: No



### Additional information

Wonderful 2 room apartment in the new project.

- fully equipped with quality furniture and appliances,
  - the apartment is very economical, in warm winter the heating can often not be turned off,
  - washing machine, dishwasher,
  - two built-in wardrobes,
  - great location,
  - good view from the windows, evening sun.
- Next to Vērmānes park, 5 minutes to Old Riga.











